



March 2025

Welcome to the 3rd edition of the **AI Nurses Network** newsletter. We hope this monthly newsletter will keep you up to date with opportunities in this clinical research network as well as insights into what is happening with artificial intelligence (AI) in nursing and healthcare. AI is a busy space so we will do our best to keep you informed! More information is available on our [website](#) and [LinkedIn group](#).

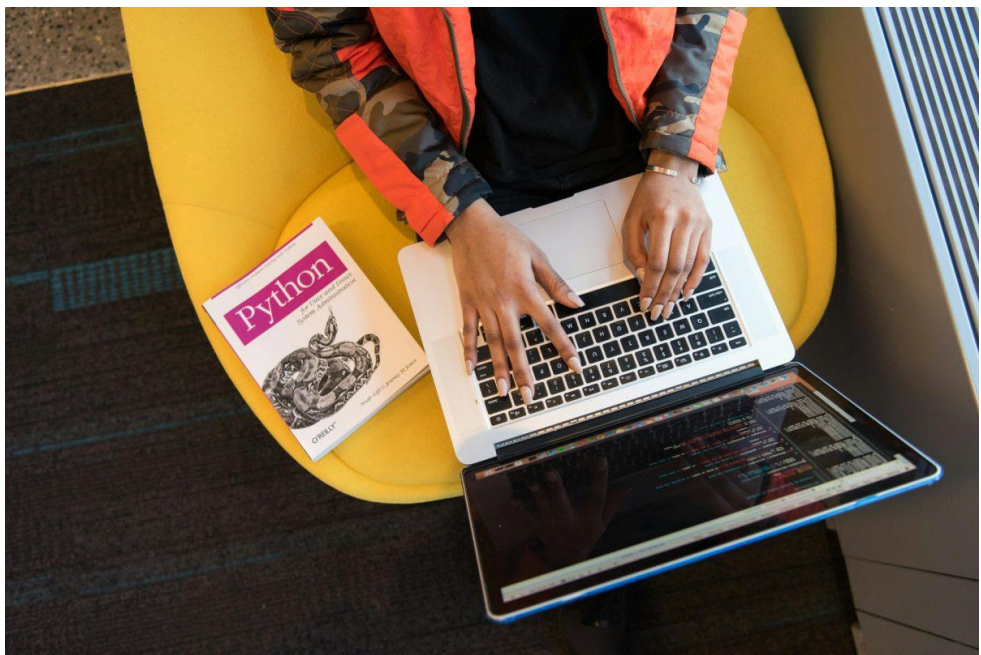


New website and webinar series

Our new AI Nurses Network website was launched this month so you can now find us online here: <https://www.ai-nurses.com/> The website has all the same resources with the addition of an archive of our newsletters and a new webinar series hosted on our [YouTube channel](#).

The first two webinars are from [Dr Vivian Hui](#) from the Hong Kong Polytechnic University who discusses AI in survivorship research and [Dr Siobhán O'Connor](#) from King's College London who talks about generative AI in nursing education. More webinars will follow each month from nurses around the world researching different aspects of artificial intelligence in nursing.

Find out More



Training on artificial intelligence

If AI is new to you and you want to learn more, we recommend watching our introductory webinar on [artificial intelligence in nursing](#) and completing a short course called [Demystifying AI](#) available for free online. A free AI jargon buster is also available [online](#) and has a glossary of key AI terms and concepts.

If you want to learn more about AI, why not try the [artificial intelligence in health analytics](#) course to understand how to implement different AI solutions for common research problems.

Find out More



Research and reports on AI

A selection of recent research studies on artificial intelligence in nursing and healthcare as well as relevant reports and strategies are summarised below to showcase the development and application of AI in health and care. More research and reports are posted regularly on our [LinkedIn group](#).

Special Issue on AI in Nursing

The [Journal of Nursing Scholarship](#) published a special issue on artificial intelligence in nursing recently which featured a range of interesting research studies and discussion articles from nurses and other colleagues around the world who are researching AI in nursing and healthcare.

[Read More →](#)

Improving musculoskeletal care with AI enhanced triage

A research study on improving musculoskeletal care with AI enhanced triage was published in NPJ Digital Medicine recently which outlines how 8044 referral letters from 5728 patients across 12 clinics were used to train and validate a machine learning model to enhance the triage process in rheumatology.

[Read More →](#)

Dynamic mortality prediction in critical care

A research study examining dynamic mortality prediction in critically ill children during interhospital transports to PICUs was published recently and developed an explainable end-to-end machine learning pipeline to forecast 30-day mortality risks.

[Read More →](#)

Predicting surgical site infections

A research study developed a multimodal neural network (machine learning) model to help predict surgical site infection within 48 hours from wound images and patient-reported outcome measures to high-quality postoperative care.

[Read More →](#)



Funding for AI research

A selection of UK and other funding programmes that are available to support research on artificial intelligence in health and care are summarised below to help you identify suitable funding streams to support your ideas for AI research. More funding opportunities are published regularly on our [LinkedIn group](#).

AI Security Institute - Challenge Fund 2025

This grant support projects that push the boundaries of AI research while ensuring security, safety and responsible development remain at the core of innovation. The AISI Challenge Fund will award grants of up to £200,000 per project to address pressing, unresolved questions in AI safety and security.

[Read More →](#)

UKRI Proof of Concept funding

This funding scheme is a UK cross-council funding call to support the commercialisation of research to enable spinouts or social ventures, licensing or other commercialisation pathway. A great opportunity with funding between £100,000 - £250,000 available if you have an AI model or tool in development.

[Read More →](#)



News and events on AI

A selection of recent news items and upcoming events on artificial intelligence from across the UK and beyond are summarised below to help you network with and learn from researchers, industry and other stakeholders working in the AI space. More news and events are posted regularly on our [LinkedIn group](#).

AI safety and accountability

[Abeba Birhane](#), founder and Principal Investigator of Trinity College Dublin's new [AI Accountability Lab](#) unpacks the biases in data and its downstream impact on AI systems and shows how it can lead to unfair outcomes in our daily lives in a Turing Lecture webinar

[Watch online →](#)

How incident reporting can help us keep ahead of AI harms

A blog from Bénédicte Rispal, John Leo Tarver, and Luis Aranda from the OECD discusses deep fake scams to AI bias and how incident reporting can help keep up ahead of AI harms.

[Read online →](#)

AI lightens the administrative work of U.S. nurses

The Cedars-Sinai hospital and academic health science centre in California, USA is testing an artificial intelligence (AI) mobile app called the Aiva Nurse Assistant that allows nurses to use a mobile phone to document patient information in real time through voice dictation.

[Read more →](#)

Empowering people with disabilities through AI technologies

A YouTube video from IBM Fellow, Chieka Asakawa, discusses how AI technologies are empowering people with disabilities. The webinar is part of the United Nation's AI for Good initiative.

[Watch online →](#)



**AI Nurses
Network**

*Copyright (C) 2025 *AI Nurses Network*. All rights reserved.*
You are receiving this email because you opted in via our website.

Our mailing address is:

AI Nurses Network, King's College London, James Clerk Maxwell Building, 57 Waterloo Road, London,
SE1 8WA, United Kingdom

Want to change how you receive these emails?

You can [update your preferences](#) or [unsubscribe](#)

