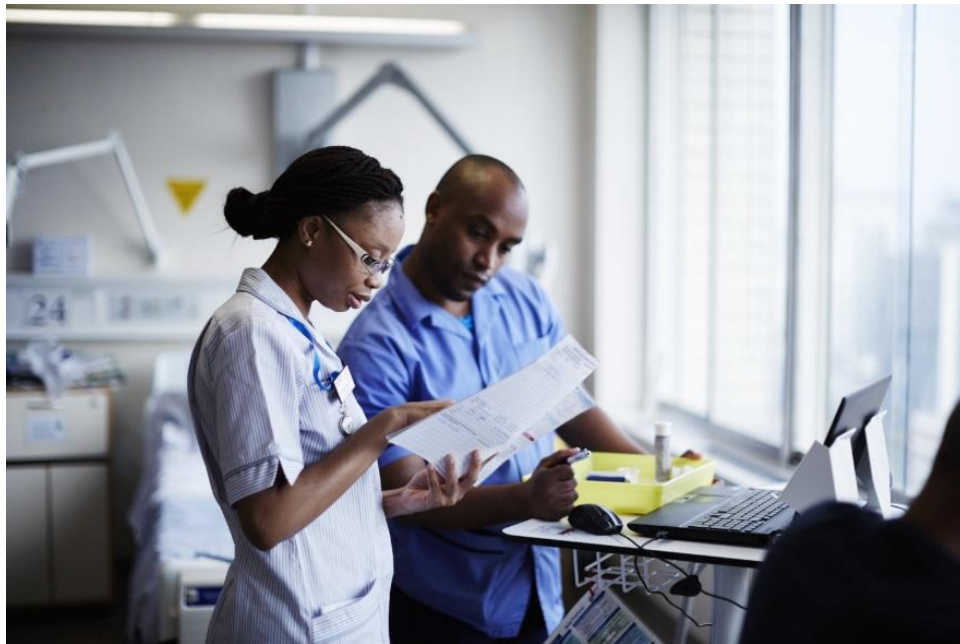


# AI Nurses Network Student Scholarship 2026 Guidelines



## Contents

Introduction .....	2
Aims and remit of the scholarship scheme .....	2
Scholarship project .....	2
Desirable criteria .....	3
Project timeline and delivery .....	3
Selection criteria .....	3
During the scholarship .....	4
Bursary .....	4
Performance .....	4
Application process .....	4
Contact us .....	4

## Introduction

The AI Nurses Network Student Scholarship aims to give undergraduate students enrolled on a pre-registration nursing programme at King's the opportunity to work on a research project with leading academics and other King's staff members during the summer break.

The scholarship scheme gives nursing students an insight into various areas of research through active contribution in experiential learning towards academic research. Undertaking the AI Nurses Network Student Scholarship will also be advantageous for nursing students interested in postgraduate study or clinical research careers. The scheme will enhance their employability and provide them with an opportunity to reflect on their gained knowledge, attributes, skills and experience.

With the guidance of an academic supervisor, students are required to contribute to an output (e.g. publication, academic paper, poster, blog, reflective diary) at the end of the scheme. Moreover, participation in the scheme is supported by a financial bursary.

## Aims and remit of the scholarship scheme

1. The AI Nurses Network Student Scholarship aims to provide an opportunity for undergraduate nursing students at King's College London to engage and participate in academic research.
2. The student scholarship is run by the Florence Nightingale Faculty of Nursing, Midwifery and Palliative Care and aims to support King's vision by getting undergraduate students involved in research and becoming producers of research.
3. The Student Scholarship is committed to delivering research-enhanced education. The scheme immerses nursing students in the research process, demonstrating the production of knowledge via a placement on a research project devised by a member of staff at King's College London.
4. The scheme is particularly dedicated to nursing students who see research as their career prospect.

## Scholarship project

The student scholar will work on the [AI Nurses Network](#) a global network supporting nurses to develop and apply AI techniques, models, and tools in education, research and clinical practice. The network is based in the Faculty of Nursing, Midwifery and Palliative Care at King's College London.

Artificial intelligence (AI) is a suite of advanced computational techniques used to build predictive and automated technologies, with transformative potential for nursing and healthcare worldwide. AI techniques, models and tools could improve health systems worldwide, as well as individual and population health outcomes. While AI may have potential for advancing health equity within and between countries, we must consider the ethical implications of deploying these advanced technologies to mitigate AI's potential harms (e.g., autonomy, accountability, bias, privacy, trust), particularly for the most vulnerable groups in society.

The student scholar will have an opportunity to get involved in range of research activities such as:

- Conducting literature reviews on AI in nursing and midwifery which may include searching databases, screening research studies, extracting data, analysing and synthesising findings, and writing up the results.
- Drafting ethics documentation and recruiting participants to research studies.
- Constructing and administering online surveys or questionnaires.
- Conducting interviews and focus groups with participants.
- Analysing quantitative and qualitative data.
- Liaising with and supporting patient and public engagement and involvement in research.
- Attending dissemination events such as seminars and conferences.
- Disseminating research findings to diverse audiences through contributing to the write-up and publication of an academic paper, a research poster, and sharing work through social media channels, online blogs, newsletters, the AI Nurses Network website and other media channels.

### Desirable criteria

We are particularly interested in welcoming onto this project a student who:

- has an interest in and passion for research on digital technologies such as AI that can be applied in nursing to improve patient care,
- has excellent team-working and communication skills, including the ability to adapt written communication for different audiences, would be well-suited to this project,
- has strong organisational and planning skills with an ability to coordinate and deliver research tasks, in particular all stages of the scoping review process, and,
- has excellent time management skills with the ability to multitask and prioritise and complete work within deadlines, in particular supporting the screening and data extraction stages of the scoping review.

### Project timeline and delivery

Start and end dates are flexible and can be discussed and agreed with the research team.

Start dates: 1<sup>st</sup> June 2026

End dates: 30<sup>th</sup> September 2026

Delivery: Hybrid working on the project is feasible and hot desking space will be provided in the James Clerk Maxwell Building, 57 Waterloo Rd, London, SE1 8WA

## **Selection criteria**

The following criteria will demonstrate the applicant's suitability:

- demonstrate suitability for the scholarship referring to the areas and tasks as outlined in the project description,
- demonstrate how undertaking the scholarship will enhance their knowledge, attributes, skills and experience,
- demonstrate how undertaking the scholarship will help their academic and career journey, and,
- demonstrate their interest in the particular scholarship.

## During the scholarship

The successful scholar must liaise with the lead academic, [Dr Siobhán O'Connor](#), to arrange specific dates within the project timeline (June to September 2025) that they will work. For the duration, it will be necessary for Dr O'Connor to meet with the student scholar at least once a week, to review work and progress, either virtually or in person. The student scholar may also work with the research team and wider partners conducting research on AI in nursing.

### Bursary

The student selected for the scholarship will receive a **maximum bursary of £1000** which can be taken part-time or full-time over the summer break. The scholar is expected to contribute a maximum of 10 hours per week over a minimum of 4 and up to a maximum of 6 weeks.

### Performance

In the event of the student's engagement falling short of the AI Nurses Network teams expectations (i.e., not attending/cancelling meetings, ignoring emails, failing to complete tasks assigned, etc.), the student will meet with Dr O'Connor with a view to bringing about improved performance on the student's part, through a consultative process.

In the event of sustained underperformance on the student's part, the AI Nurses Network team reserves the right to terminate the scholarship and retract the bursary. The AI Nurses Network team also reserves the right to terminate the scholarship and retract the bursary if the student fails to complete agreed full-time or part-time hours.

## Application process

To apply for the AI Nurses Network Student Scholarship please complete the [online application form](#). The QR code below will also direct you to the online application form. A MS Word version of this application form is available on the [website](#) to help you prepare and save your application offline.

The AI Nurses Network Student Scholarship closing date is **29th May 2026 at 12:00 noon**. No extensions to the deadline are offered, with no exceptions. Late applications will **not** be accepted.



## Contact us

If you have any questions about the guidelines, application form or the AI Nurses Network Student Scholarship, please get in touch with the team via our email: [ai-nurses@kcl.ac.uk](mailto:ai-nurses@kcl.ac.uk)