



May 2026

Welcome to the **May 2026** edition of the **AI Nurses Network** newsletter.

We hope this monthly newsletter will keep you up to date with opportunities in this global network as well as insights into what is happening with artificial intelligence (AI) in nursing and healthcare. AI is a busy space so we will do our best to keep you informed! More information is available on our [website](#) and [LinkedIn group](#).

Webinar series:

**Dr Mark Doran,
Queen's University Belfast,
Northern Ireland**



Webinar Series

This month we have a great webinar from [Dr Mark Doran](#), Queen's University Belfast, Northern Ireland who discusses using artificial intelligence in nursing education.

Our webinar series is hosted on our dedicated [YouTube channel](#) and more webinars will follow each month from nurses around the world researching different aspects of artificial intelligence in healthcare or introducing AI tools into clinical practice, education or research.

[Find out More](#)

AI for Scientific Research

KHP Digital Health Academy

- Written by experts
- Introductory
- 100% online
- Video content
- Multiple choice quiz
- Approx. 3-4 hours to complete
- Completion certificate (after all 3 modules are completed)

Continue



About this course

AI for Scientific Research is an asynchronous course focusing on the foundations of using artificial intelligence (AI) in scientific research, covering the responsible and appropriate use of AI in science, the practical applications of AI techniques and tools in conducting scientific research, and using AI to share scientific findings with a range of stakeholders.

Training on Artificial Intelligence

If AI is new to you and you want to learn more, we recommend watching our introductory webinar on [artificial intelligence in nursing](#) and completing a short, free, online course called [Demystifying AI](#). An [AI dictionary](#) is also available online with a glossary of key AI terms and concepts.

If you want to learn more about AI, why not try the [AI for Scientific Research](#) course. This is an asynchronous course focusing on the foundations of using artificial intelligence in scientific research, covering the responsible and appropriate use of AI in science, the practical applications of AI techniques and tools in conducting scientific research, and using AI to share scientific findings with a range of stakeholders.

Find out more



Research and reports on AI

A selection of recent research studies on artificial intelligence in nursing and healthcare as well as relevant reports and strategies are summarised below to showcase the development and application of AI in health and care. More research and reports are posted regularly on our [LinkedIn group](#).

Omission and hallucination prevalence of clinical guidelines in diagnostic large language model outputs

Meaningful assessments of how large language models (LLMs) incorporate clinical guidelines require large-scale testing over many queries. This study evaluates the prevalence of clinical guideline omissions and hallucinations in a large sample of diagnostic LLM outputs. [Read More →](#)

An exploration of undergraduate nursing students' heavy use of generative artificial intelligence in academic practice: A descriptive phenomenological study

Generative artificial intelligence is increasingly integrated into nursing education. Within this context, heavy use of these tools has emerged among undergraduate nursing students, raising concerns about the impact on learning and competency development, yet their lived experiences underlying this phenomenon remain unexplored. This study explores the lived experiences of undergraduate nursing students who

heavily use generative artificial intelligence in academic practice. [Read More →](#)

Performance of a large language model on the reasoning tasks of a physician

Brodeur *et al.* pitted a large language model, the OpenAI o1 series, directly against hundreds of physicians at different levels of training and experience on a variety of clinical cases ranging from published patient vignettes to evaluations of brand-new emergency room patients, as well as on clinical tasks including both diagnosis and planning of clinical management (see the Perspective by Hopkins and Cornelisse). Across a variety of scenarios and applications, the large language model outperformed both human physicians and older models, suggesting its potential utility for clinical care. [Read More →](#)

The efficacy of artificial intelligence-generated music-based interventions on health outcomes: A systematic review

This systematic review aimed to evaluate the efficacy of artificial intelligence (AI)-generated music interventions for improving health outcomes in human populations. AI-generated music provides nurses with innovative tools for personalised, music-based interventions. Nurses can leverage these tools to implement therapeutic care, offering tailored music for anxiety reduction, sleep promotion, and cognitive stimulation in clinical and community settings. [Read more →](#)



Funding for AI research

A selection of UK and other funding programmes that are available to support research on artificial intelligence in health and care are summarised below to help you identify suitable funding streams to support your ideas for AI research. More funding opportunities are published regularly on our [LinkedIn group](#).

Special Open Access Funding Opportunity

We are pleased to announce a special collaboration between Nursing & Health Sciences and the AI Nurses Network. An Open Access (OA) publication grant is available to support the publication of cutting-edge research in the Nursing & Health Sciences journal. We welcome innovative research on Artificial Intelligence in nursing practice. [Find out more →](#)

COST Action

COST (European Cooperation in Science and Technology) is a funding organisation for research and innovation networks. It helps connect research initiatives across Europe and beyond and enable researchers and innovators to grow their ideas in any science and technology field by sharing them with their peers. COST Actions are bottom-up networks with a duration of four years that boost research, innovation and careers. [Find out more →](#)



News and events on AI

A selection of recent news items and upcoming events on artificial intelligence from across the UK and beyond are summarised below to help you network with and learn from researchers, industry and other stakeholders working in the AI space. More news and events are posted regularly on our [LinkedIn group](#).

CONFERENCE – AI Nurses Network Conference 2026 – London, UK

The inaugural AI Nurses Network Conference will take place on the 1st September 2026 at King's College London. The aim of the national conference is to present progress and best practices in AI development, use and evaluation that supports nursing practice locally and internationally, and inspire debate on the development of different forms of AI and its use in nursing practice, education, and research. [Register to attend here →](#)

PERSPECTIVE – The World Is Already Resisting AI. Now, There is a List to Prove It

The AI Resist List, which launched recently is a collaboratively built, publicly accessible database documenting acts of resistance to the AI industry from across the world. The project — which spans legal challenges, worker organizing, community campaigns, artistic interventions, and technical tools — was built by a team of researchers, journalists, and critical scholars. [Read more →](#)

VIDEO – Gemini Omni new world model

Omni is Gemini's new model that can create anything from any input — starting with video. With Omni, you can combine images, audio, video and text as input and generate high-quality videos grounded in Gemini's real-world knowledge. You can also easily edit your videos through conversation. [Watch online →](#)

TRAINING – Codex vs. Claude Code: Key Differences and When to Use Each

Learn how OpenAI Codex and Claude Code work, how they compare on real tasks, and which one to use depending on your workflow and budget. [Read online →](#)

NEWS – Major Healthcare Providers Hit With Class Action Over AI Transcriptions

AI transcription technology was allegedly used to capture and transcribe physician–patient conversations, using microphone-enabled devices in exam rooms without necessary consent. [Read more →](#)

NEWS – Datacentres using 6% of electricity supply in UK and US, research says

Industry body says energy consumption driven by AI up 15% globally in two years as it warns of societal backlash. The proportion of electricity used by vast warehouses stacked with microchips to power AI and the internet has risen 15% worldwide in the past two years as annual global investment in datacentres approaches \$1tn (£740bn) – nearly 1% of the global economy, according to the International Data Center Authority (IDCA). [Read more →](#)

AI Nurses Network Team

This monthly newsletter is brought to you by the AI Nurses Network team led by [Dr Siobhán O'Connor](#) at King's College London. It is supported by a core team in the United Kingdom and a network of country directors worldwide.



Dr Siobhán O'Connor
Global Director



Core Team



Dr Crina Grosan



Professor Rebecca Oakey



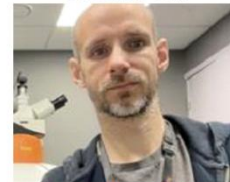
Dr Joanne Cull



Dr Mengying Zhang



Dr Xiaoyang Li



Dr Nathan Blake

Country Directors



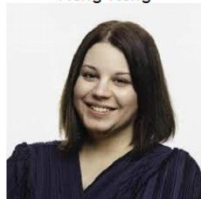
Dr Vivian Hui
Hong Kong



Dr Lu-Yen Anny Chen
Taiwan



Professor Janet Delgado
Japan



Dr Lucija Gosak
Slovenia



Dr Charlene Chu
Canada



Dr Charlene Ronquillo Canada

*Copyright (C) 2026 *AI Nurses Network*. All rights reserved.*

You are receiving this email because you opted in to our newsletter via our website.



Mailing address is: AI Nurses Network, King's College London, James Clerk Maxwell Building, 57 Waterloo Road, London, SE1 8WA, United Kingdom. Email: ainurses@kcl.ac.uk

Want to change how you receive these emails?
You can [update your preferences](#) or [unsubscribe](#)