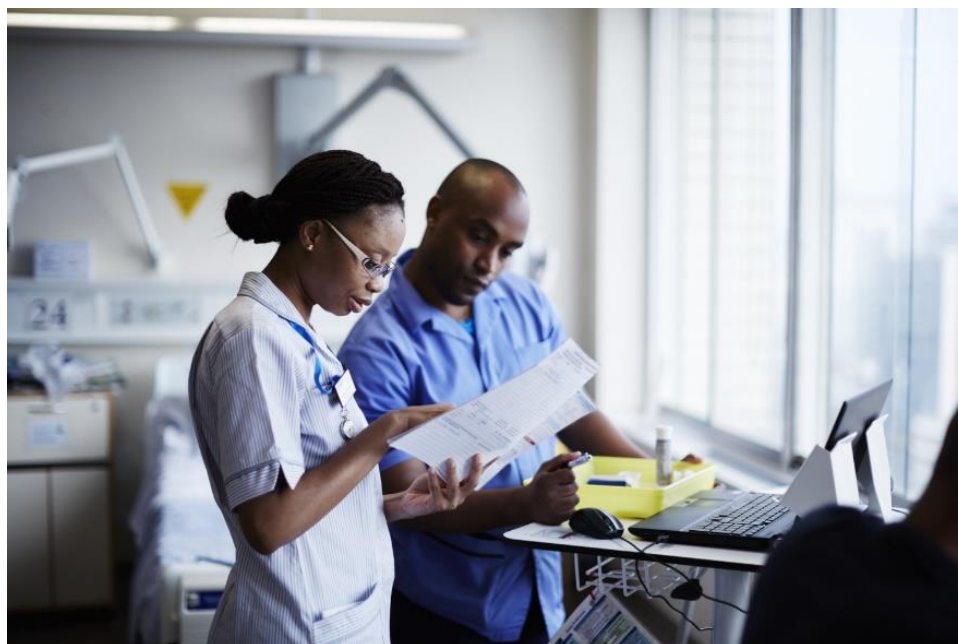


AI Nurses Network Student Scholarship 2025 Guidelines



Contents

Introduction	2
Aims and remit of the scholarship scheme	2
Scholarship project	2
Background	2
Key tasks.....	3
Expected outputs.....	3
Desirable criteria	4
Project timeline and delivery.....	4
Selection criteria	4
During the scholarship's project	4
Bursary.....	4
Performance.....	4
Application process.....	5
Contact us.....	5

Introduction

The AI Nurses Network Student Scholarship aims to give undergraduate students enrolled on a pre-registration nursing programme at King's the opportunity to work on a research project with leading academics and other King's staff members during the summer break.

The scholarship scheme gives nursing students an insight into various areas of research through active contribution in experiential learning towards academic research. Undertaking the AI Nurses Network Student Scholarship will also be advantageous for nursing students interested in postgraduate study or clinical research careers. The scheme will enhance their employability and provide them with an opportunity to reflect on their gained knowledge, attributes, skills and experience.

With the guidance of an academic supervisor, students are required to produce an academic output (e.g. publication, academic paper, poster etc.) at the end of the scheme). Moreover, participation in the scheme is supported by a financial bursary.

Aims and remit of the scholarship scheme

1. The AI Nurses Network Student Scholarship aims to provide an opportunity for undergraduate nursing students at King's College London to engage and participate in academic research.
2. The student scholarship is run by the Florence Nightingale Faculty of Nursing, Midwifery and Palliative Care and aims to support King's vision by getting undergraduate students involved in research and becoming producers of research.
3. The Student Scholarship is committed to delivering research-enhanced education. The scheme immerses nursing students in the research process, demonstrating the production of knowledge via a placement on a research project devised by a member of staff at King's College London.
4. The scheme is particularly dedicated to nursing students who see research as their career prospect.

Scholarship project

The student scholar will work on the [AI Nurses Network](#) a clinical research network supporting nurses in the United Kingdom and beyond with AI research. The network is based in the Faculty of Nursing, Midwifery and Palliative Care at King's College London.

Background

Artificial intelligence (AI) is a suite of advanced computational techniques used to build predictive and automated technologies, with transformative potential for nursing and healthcare worldwide. AI techniques, models and tools could improve health systems worldwide, as well as individual and population health outcomes. While AI may have potential for advancing health equity within and between countries, we must consider the ethical implications of deploying these advanced technologies to mitigate AI's potential harms (e.g., autonomy, accountability, bias, privacy, trust), particularly for the most vulnerable groups in society.

The purpose of the project is to conduct a scoping review to map and synthesise existing scientific evidence on ethical issues (e.g., accountability, autonomy, equity, integrity, privacy, safety, security, trust) related to all types of AI techniques, models and tools used in nursing and midwifery. While ethical discussions around AI in healthcare are growing, most of the literature focuses on medicine and other disciplines leaving a critical gap in understanding how AI impacts the professional practice of nurses and midwives across domains such as education, clinical care, public health and global health, management and leadership, research, and policy.

This scoping review is timely and novel as it aims to clarify the scope and nature of current scientific evidence, identify knowledge gaps, and provide informed recommendations to guide future research, education, clinical practice, and policy in nursing and midwifery.

Five bibliographical databases will be searched for peer reviewed and grey literature published from 2014 to the end of 2025 using the concepts of nursing or midwifery, ethics, and AI, and related terms. Records will be independently screened by independent reviewers and included if they report on AI ethics in nursing or midwifery and are written in English.

Data will be extracted and both descriptive and framework analysis performed to report key ethical issues related to AI in nursing and midwifery. The scoping review results will be published open access in a leading nursing journal to share the findings with a wide audience.

Key tasks

The student scholar will be involved in the following tasks:

- Working with the AI Nurses Network team to conduct a scoping review on ethical issues associated with AI in nursing and midwifery. This will include:
 - searching the literature,
 - screening research studies for relevancy,
 - extracting data from relevant studies,
 - analysing and synthesising data into review results, and
 - writing the scoping review.
- Disseminating scoping review findings to diverse audiences through contributing to the write-up and publication of an academic paper, a research poster, and sharing work through social media channels, online blogs, newsletters, the AI Nurses Network website and other media channels.

Expected outputs

This student scholarship will result in several outputs:

1. An academic paper reporting on the findings of the scoping review,
2. A research poster presenting the findings of the scoping review, and,
3. A blog post on the student scholarship experiences and being part of the AI Nurses Network to share on the network's website, social media, and electronic newsletter.

Desirable criteria

We are particularly interested in welcoming onto this project a student who:

- has an interest in and passion for research on digital technologies such as AI that can be applied in nursing to improve patient care,
- has excellent team-working and communication skills, including the ability to adapt written communication for different audiences, would be well-suited to this project,
- has strong organisational and planning skills with an ability to coordinate and deliver research tasks, in particular all stages of the scoping review process, and,
- has excellent time management skills with the ability to multitask and prioritise and complete work within deadlines, in particular supporting the screening and data extraction stages of the scoping review.

Project timeline and delivery

Start dates: 1st June 2025

End dates: 30th September 2025

Delivery: Hybrid working on the project is feasible and hot desking space will be provided in the James Clerk Maxwell Building, 57 Waterloo Rd, London

Selection criteria

The following criteria will demonstrate the applicant's suitability:

- demonstrate suitability for the scholarship referring to the areas and tasks as outlined in the project description,
- demonstrate how undertaking the scholarship will enhance their knowledge, attributes, skills and experience,
- demonstrate how undertaking the scholarship will help their academic and career journey, and,
- demonstrate their interest in the particular scholarship.

During the scholarship's project

The successful scholar must liaise with the lead academic, [Dr Siobhán O'Connor](#), to arrange specific dates within the project timeline (June to September 2025) that they will work.

For the duration, it will be necessary for Dr O'Connor to meet with the student scholar at least once a week, to review work and progress, either virtually or in person. The student scholar may also work with the research team and wider partners conducting the scoping review.

Bursary

The student selected for the scholarship will receive a bursary of £520 per week if working full-time (35 hours) or pro rata for part-time scholarly work £260 (17.5 hours).

Performance

In the event of the student's engagement falling short of the AI Nurses Network teams expectations (i.e., not attending/cancelling meetings, ignoring emails, failing to complete

tasks assigned, etc.), the student will meet with Dr O'Connor with a view to bringing about improved performance on the student's part, through a consultative process.

In the event of sustained underperformance on the student's part, the AI Nurses Network team reserves the right to terminate the scholarship and retract the bursary. The AI Nurses Network team also reserves the right to terminate the scholarship and retract the bursary if the student fails to complete agreed full-time or part-time hours.

Application process

To apply for the AI Nurses Network Student Scholarship please complete the [online application form](#). The QR code below will also direct you to the online application form.

A MS Word version of this application form is available on the [website](#) to help you prepare and save your application offline.

The AI Nurses Network Student Scholarship closing date is **30th May 2025 at 12:00 noon**. No extensions to the deadline are offered, with no exceptions. Late applications will **not** be accepted.



Contact us

If you have any questions about the guidelines, application form or the AI Nurses Network Student Scholarship, please get in touch with the team via our email: ai-nurses@kcl.ac.uk